

A3 Professional Image flatbed scanner

Meets Your Ultimate Pursuit of Image Quality!

ScanMaker 9830XL



Large A3
Scanning Area



Exceptional Image Quality
and Color Accuracy



Dual Light Source
with Flexible Adjustment



Professional
Scanning Software



Flexible TMA Support

ScanMaker 9830XL

Large A3 Scanning Area

With a maximum scanning area of 12" x 16.9", it handles a variety of materials, including large artworks and architectural blueprints. Perfect for artists, designers, and studios, delivering high-quality results for professional imaging and creative projects.



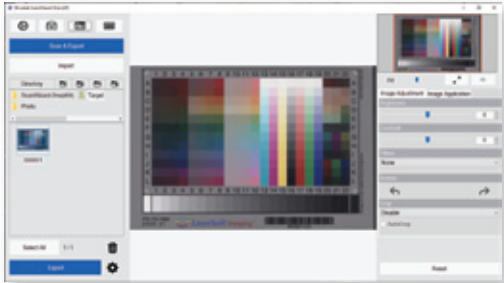
Dual Light Source with Flexible Adjustment

Featuring dual lighting, it offers single or dual-light modes: single-light enhances shadow depth, while dual-light reduces crease shadows for optimal image quality.



Exceptional Image Quality and Color Accuracy

With 1600 dpi optical resolution and a color calibration tool, it ensures precise detail reproduction and consistent, accurate colors.



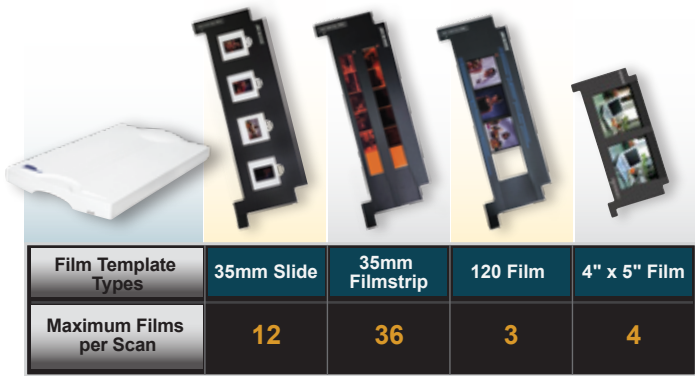
Optional Professional Scanning Software

LaserSoft SilverFast Ai Studio is a globally renowned scanning software with an intuitive graphical interface. Its user-friendly design lets you effortlessly access powerful features, making it ideal for users with high-quality image demands.



Optional Flexible TMA Support

An external Transparency Media Adapter (TMA) expands functionality to scan slides, positives, negatives, and X-rays, supporting sizes up to 11.7" x 15.9". The dedicated TMA film holder simplifies scanning 35mm slides, 120 format (60 x 170 mm panoramic filmstrips) and 4" x 5" sheets, covering most film types for business and professional use.



Specifications

Scanner Type Desktop color flatbed scanner	Memory Size 8Gb	Scanning Speed Reflective: ≤ 12 sec. @400 dpi Transparent: ≤ 11.5 sec. @400 dpi	Weight 24.3 lbs / 11 kg 33.1 lbs / 15 kg (with / TMA)
Image Sensor CCD	Optical Density Transparent: 3.8D	Output File Format JPG, TIFF	Power Consumption 90W (max)
Light Source LED	Scanning Area Reflective: 12" x 16.9" / 304.8 x 429.3 mm Transparent: 11.7" x 15.9" / 297.1 x 403.8 mm	Software Driver TWAIN	Voltage AC 100-240V, 50/60 Hz, 1.3A Max. DC 24V, 3.75A Max.
Color Modes Color / Grayscale	TMA Film Template Types (Optional) 35mm Slide Template 35mm Filmstrip Template 120 Film Template 4" x 5" Film Template	Dimensions (L x W x H) 27.2" x 15.2" x 5.9" / 690 x 385 x 150 mm 27.2" x 15.2" x 7.7" / 690 x 385 x 195 mm (with / TMA)	Environment Operating temperature: 41° to 104°F (5° to 40°C) Relative humidity: 20% to 85%
Interface USB 3.0			
Resolution 1600 dpi			

System Requirements

- Color display with 24-bit output capability
- 4GB RAM or more (8GB is recommended)
- Intel Core i5 or higher-grade CPU
- Windows 10 / 11 : macOS 11 or later

Included Software

- ScanWizard-One (PC)
- ScanPotter (Mac)

Optional Software

- LaserSoft SilverFast Ai Studio (PC / Mac)

For more details on product, please contact your local Microtek sales or dealers.

